

# RNAV Departures at Boston [FOR FLIGHT SIMULATION USE ONLY]

At KBOS, pilots should expect to be cleared via an RNAV pilot navigation departure procedure. Procedures are related to an exit fix, so a flight planned to cross SSOXS, regardless of departure runway, will be issued the SSOXS departure. Air traffic control is expecting precise compliance on the lateral route/track. ATC also relies on aircraft to climb to the “Top Altitude” on the chart, then level off until cleared higher.

Lateral Route	Top Altitude
Select the departure procedure and correct runway in navigation equipment. Prior to departure, <a href="#">download the Departure Procedure</a> and ensure waypoints in the GPS/FMS match the chart.	On initial clearance, pilots are instructed to “climb via SID”. This means: follow altitude and speed restrictions then level off at the top altitude until cleared higher. The top altitude for KBOS jets is 5,000’.

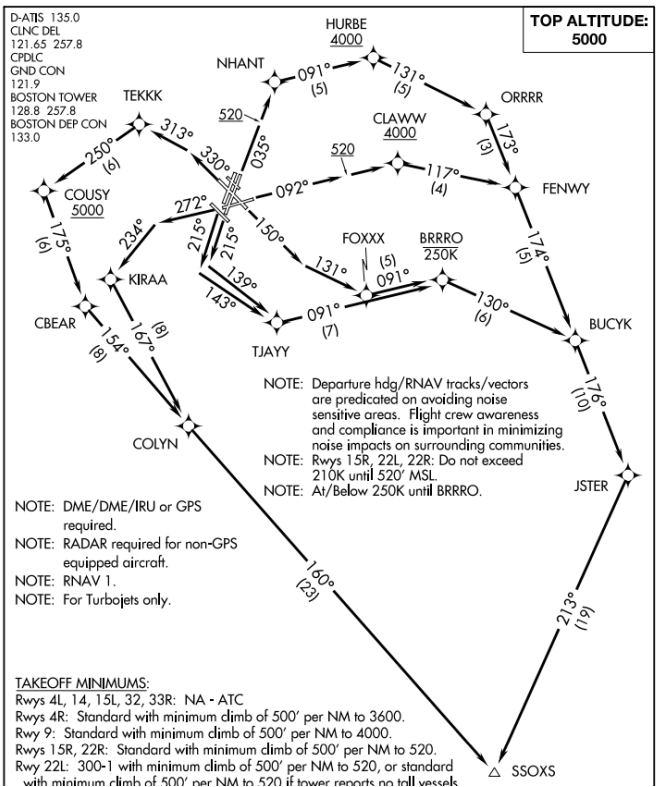
## Example – SSOXS Departure from Runway 22R

The SSOXS departure is pictured to the right.

For departure on Runway 22R, the pilot should see the following waypoints: **TJAYY > BRRRO > BUCYK > JESTR > SSOXS**. ATC will not prompt to make turns or proceed direct; in this example, the pilot should fly 215° until intercepting the 143° track to TJAYY, then continue from there. Practically, this means a pilot should fly runway heading to 520’, then turn left direct TJAYY, then continue on. If a pilot were to fly direct SSOXS while skipping other waypoints, fly runway heading expecting a turn, or went to a fix like TEKKE (only for Runway 33L), all of these would be incorrect and could create a conflict with other aircraft.

On departure, the pilot should climb to 5,000’, but not climb any higher until given further clearance.

Pilots unfamiliar or unsure of how to fly this procedure should advise ATC “unable RNAV departures” and request to fly the radar vectored LOGAN departure.



## Airspace Briefing Guide

For other helpful tips and recommended practices about flying online, read our [Airspace Briefing Guide](#).

## About Boston Virtual ARTCC

Boston Virtual ARTCC provides air traffic control within the Boston ARTCC on VATSIM. We also encourage pilot members to join the ARTCC and take advantage of exclusive scenery updates, training programs, and one of the most active and realistic aviation communities. For more information about BVA, visit [bvartcc.com](#).